



GMT MONTHLY MEMBERSHIP PROGRESS REPORT

Results as of: 4/30/2025

Multiple District 16

LOCATION: NEW JERSEY

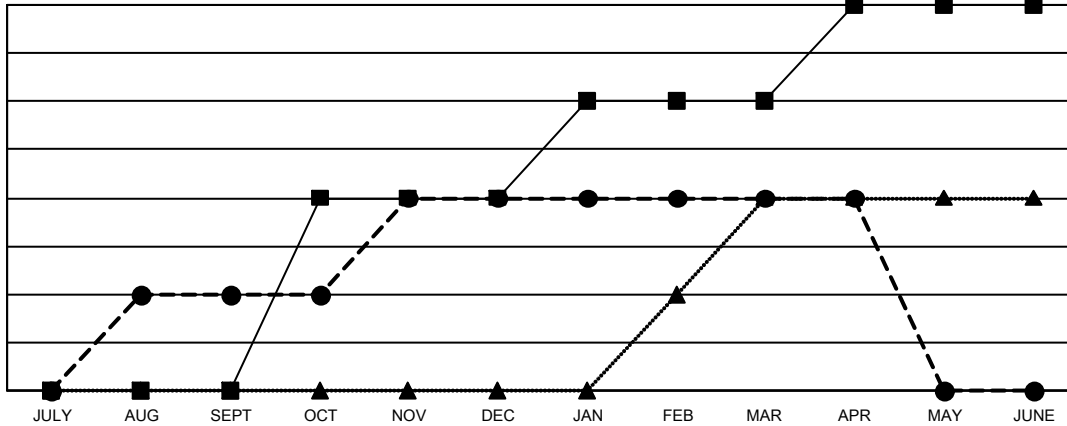
GMT: OPEN

GMT CA 1

Clubs			
RESULTS FOR 2024-2025			
QUARTER	NEW CLUB GOAL	NEW CLUBS	DROPPED CLUBS
JULY/AUG/SEPT	0	1	1
OCT/NOV/DEC	2	1	0
JAN/FEB/MAR	1	0	1
APR/MAY/JUNE	1	0	0

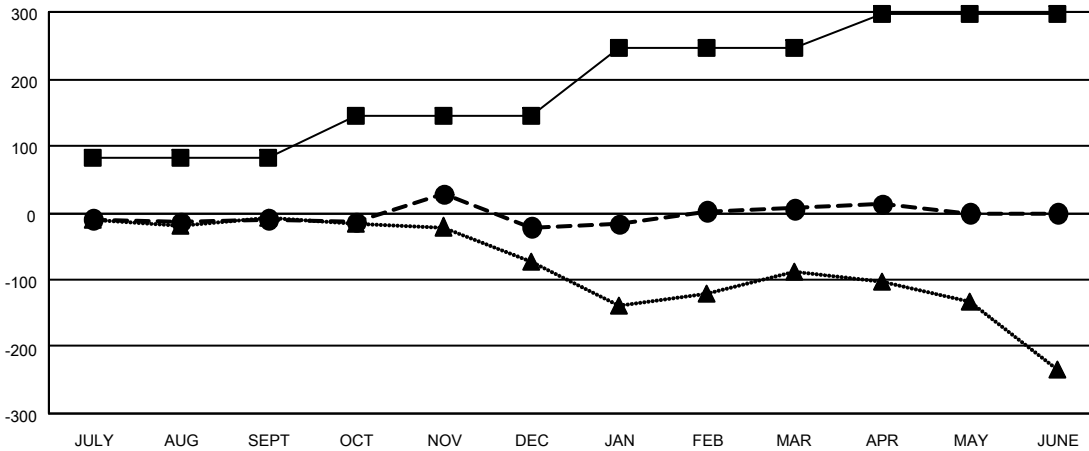
Members			
RESULTS FOR 2024-2025			
QUARTER	MEMBER GROWTH NET GOAL	MEMBER GROWTH ACTUAL	DROPPED MEMBERS ACTUAL (including transfers)
JULY/AUG/SEPT	82	107	97
OCT/NOV/DEC	62	98	107
JAN/FEB/MAR	102	130	89
APR/MAY/JUNE	52	36	26

GOALS AND ACTUAL NEW CLUBS CUMULATIVE



- - CURRENT YEAR GOALS FOR NEW CLUBS
- - CURRENT YEAR ACTUAL NEW CLUBS
- ▲ - LAST YEAR ACTUAL NEW CLUBS

GOALS AND ACTUAL MEMBERS CUMULATIVE



- - MEMBER GROWTH NET GOAL
- - MEMBER GROWTH ACTUAL
- ▲ - LAST YEAR MEMBERSHIP ACTUAL

DROPPED CLUBS: 2	
DROPPED MEMBERS	
DECEASED	29
CLUB CANCELLED	2
OTHER	287
TOTAL	318

75 CLUBS OF 155 ADDED 1 OR MORE NEW MEMBERS

GENDER DISTRIBUTION	
MALE	2,337 (63.47%)
FEMALE	1,345 (36.53%)

[CLICK HERE FOR CUMULATIVE MEMBERSHIP DATA](#)

TOTAL FAMILY UNIT MEMBERS	0
FAMILY MEMBERS PAYING HALF DUES	0